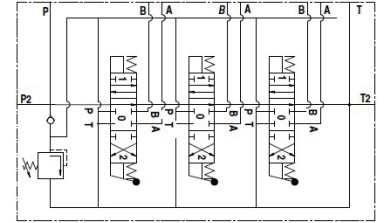
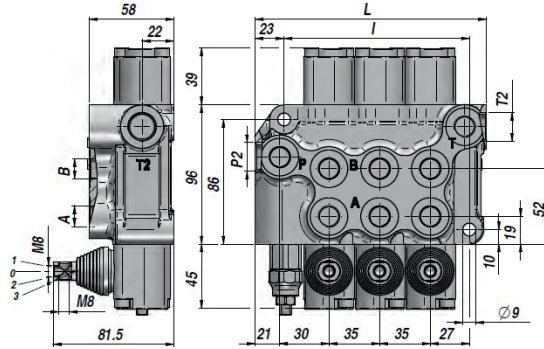
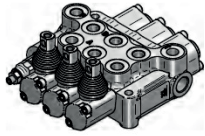


## BM 40

Qn  
35 l/min

Q max  
45 l/min

## DISTRIBUTEUR MONOBLOC MONOBLOCK VALVE



Code Code	Type Type	N° Leviers Sections No.	Orifices - Threads					PN bar	P MAX U bar	P MAX S bar	L	I	kg
			A-B BSP	P BSP	T BSP	P2 BSP	T2 BSP						
DBM2111001	BM 40/1/GU/MO A1	1									90	55	2.5
DBM2211001	BM 40/2/GU/MO A1x2	2									125	90	3.7
DBM2311001	BM 40/3/GU/MO A1x3	3									160	125	5
DBM2411001	BM 40/4/GU/MO A1x4	4									195	160	6.2
DBM2511001	BM 40/5/GU/MO A1x5	5	3/8"	3/8"	3/8"	1/2"	1/2"	250	320	80	230	195	7.4
DBM2611001	BM 40/6/GU/MO A1x6	6									265	230	8.6
DBM2711001	BM 40/7/GU/MO A1x7	7									300	265	9.8
DBM2811001	BM 40/8/GU/MO A1x8	8									335	300	11

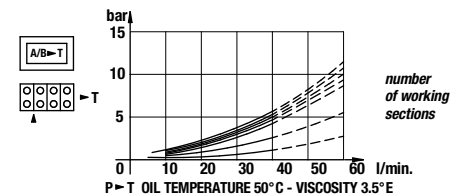
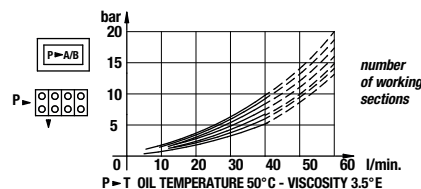
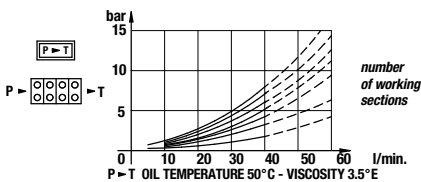
PN = Pression nominale - Nominal pressure

P MAX U = Pression maxi sur les orifices - Max. pressure on ports

P MAX S = Pression maxi sur le retour - Max. pressure in tank-line

Limiteur de pression - Relief Valve : X=30:90 bar (70) - U= 80:230 bar (140) (Standard) - K= 150:300 bar (200)

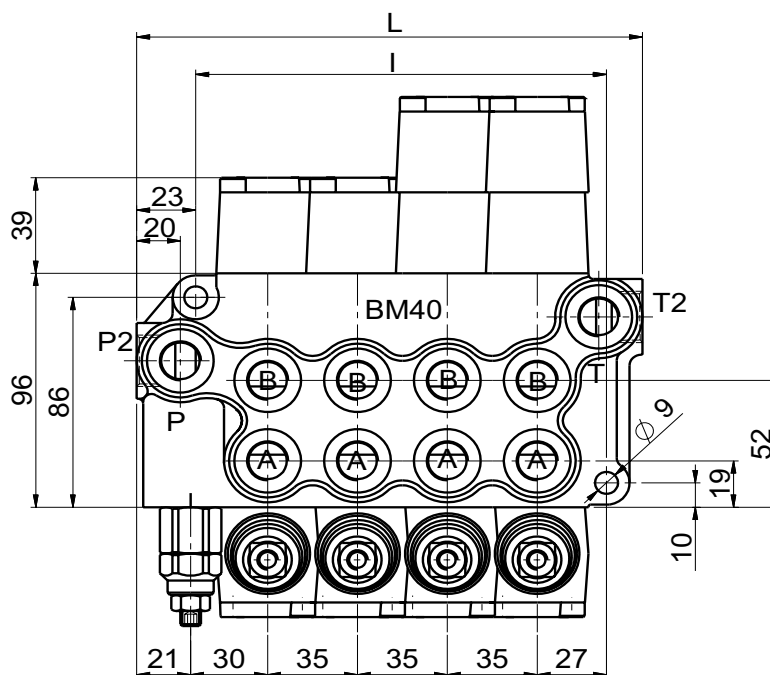
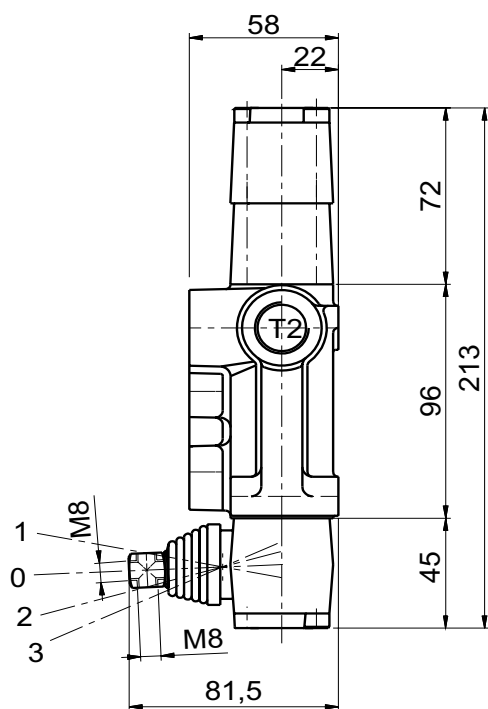
LES CODES CORRESPONDENT A : DOUBLE EFFET - 3 POSITIONS - RAPPEL RESSORT - A/B FERMEE - ORIFICES BSP - PREDISPOSITION POUR CENTRE A SUIVRE  
THESE CODES REFER TO: DOUBLE ACTING TYPE - 3 POSITIONS - SPRING RETURN - A/B PORTS CLOSED - BSP THREADS - MACHINED FOR CARRY-OVER



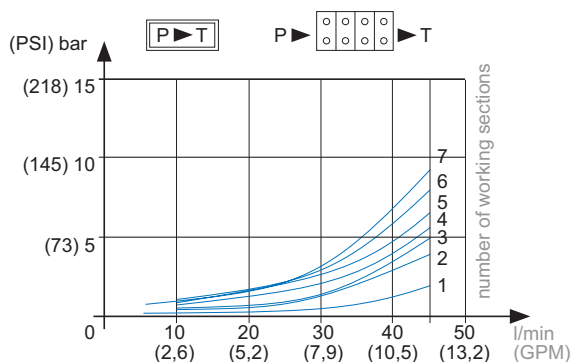
	TIROIR SPOOL TYPE
A	
B	
C	
D	
L	
Z	

	POSITIONNEUR SPOOL CONTROL
1	
2	
3	
6	
7	
8	
12	
42	

	SUR DEMANDE ON REQUEST
MC	Commande manuelle + téton Manual control with cam
MX	Levier de sécurité Safety lever
DO	Come de commande Cam operator
JS	Double commande Joystick
1P	Commande pneumatique Pneumatic operator
MSW	Microrupteur Microswitch
CO	Centre a suivre Power beyond (carry over)
CCP	Centre fermé Closed center plug

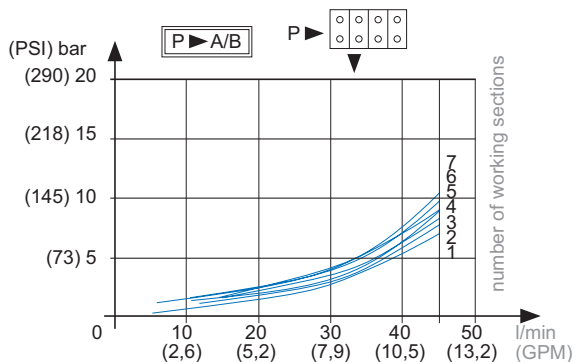


P ▶ T - oil temperature 50 °C - viscosity 32 mm<sup>2</sup>/s

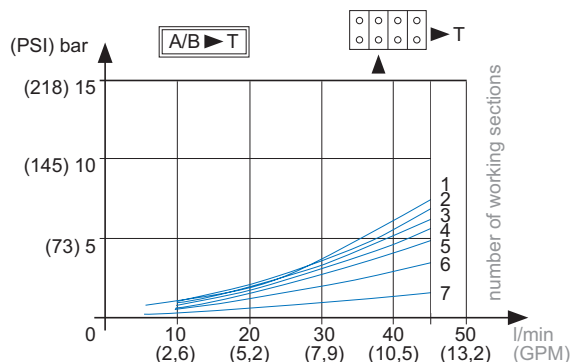


INTERNAL OIL LEAKAGE	
From A B to T	4 ÷ 8 cc/min
TESTING CONDITIONS	
Pressure	100 bar
Oil temperature	40 °C
Oil viscosity	32 mm <sup>2</sup> /s

P ▶ A/B - oil temperature 50 °C - viscosity 32 mm<sup>2</sup>/s



A/B ▶ T - oil temperature 50 °C - viscosity 32 mm<sup>2</sup>/s



**TECHNICAL CHARACTERISTICS**

NUMBER OF SECTIONS	L		I		Kg	Pound
	(mm)	(in)	(mm)	(in)		
BM40/1	90	3.54	55	2.17	2.5	5.51
BM40/2	125	4.92	90	3.54	3.7	8.16
BM40/3	160	6.29	125	4.92	5.0	11.02
BM40/4	195	7.68	160	6.29	6.2	13.67
BM40/5	230	9.06	195	7.68	7.4	16.31
BM40/6	265	10.43	230	9.06	8.6	18.96
BM40/7	300	11.81	265	10.43	9.8	21.60

TECHNICAL CHARACTERISTICS		
NOMINAL FLOW	35 l/min	9 GPM
MAX FLOW	45 l/min	12 GPM
NOMINAL PRESSURE	250 bar	3600 PSI
MAX PRESSURE ON PORTS	320 bar	4700 PSI
MAX PRESSURE ON TANK-LINE	80 bar	1100 PSI

STANDARD THREADS					
	A - B	P	T	P2	T2
G (BSP)	3/8"	3/8"	3/8"	1/2"	1/2"
F (UNF)	3/4" - 16	3/4" - 16	3/4" - 16	7/8" - 14	7/8" - 14

