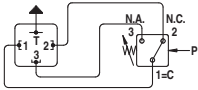
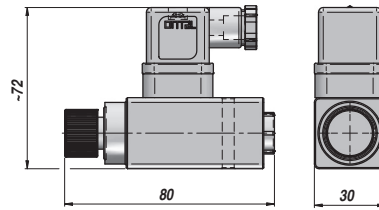
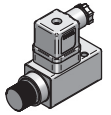


**PRESSOSTAT REGLABLE
ADJUSTABLE PRESSURE SWITCH**

F5

EGALEMENT DISPONIBLE
AVEC MOLETTE DE REGLAGE
Type "APIF5*P"

ALSO AVAILABLE
WITH KNOB "APIF5*P" Type



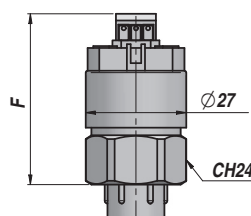
Code Code	Type Type	Plage de réglage Setting Range	Exécution Execution	P MAX bar	Filetage Thread BSP	kg
APIF530000	F53	5 > 50 bar		300		0,15
APIF550000	F55	15 > 150 bar	Piston	350	1/4"	0,15
APIF570000	F57	30 > 300 bar		400		0,15

Température d'exercice - Working temperature : -20°C - +80°C

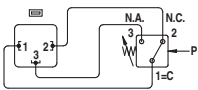
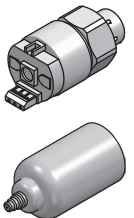
MATERIEL CORPS : ALUMINIUM
BODY MATERIAL : ALUMINIUM

**PRESSOSTAT REGLABLE AVEC CAPUCHON DE PROTECTION (P1)
ADJUSTABLE PRESSURE SWITCH WITH PROTECTION CAP (P1)**

F4



P1



Code Code	Type Type	Plage de réglage Setting Range	Exécution Execution	P MAX bar	Filetage Thread BSP	kg
APIF4R10P2	F4R-1-P2+P1	0.2 > 2.5 bar	Membrane	25		0,05
APIF4S10P2	F4S-1-P2+P1	1 > 12 bar	Membrane	25		0,05
APIF4T10P2	F4T-1-P2+P1	5 > 50 bar	Piston	300	1/4"	0,05
APIF4V10P2	F4V-1-P2+P1	10 > 100 bar	Piston	300		0,05
APIF4Z10P2	F4Z-1-P2+P1	20 > 200 bar	Piston	300		0,05
APIF4Y10P2	F4Y-1-P2+P1	50 > 400 bar	Piston	600		0,05

Température d'exercice - Working temperature : -20°C - +80°C

MATERIEL CORPS : ACIER
BODY MATERIAL : STEEL

Caratteristiche Tecniche:

Temperatura d'impiego: -25°C ÷ +85°C
 Frequenza di commutazione: 120 cicli/min
 Punto d'intervento: regolabile tramite vite interna o pomolo con vite di bloccaggio
 Precisione d'intervento: ± 3% del fondo scala a 20°C
 Valore fisso d'isteresi: -15% del fondo scala a 20°C
 Peso: 0,15 Kg
 Vita Meccanica: 10⁶cicli a 70 bar (1000 PSI) a 20°C

Caratteristiche Elettriche:

- Carico Max: 5 A a 250 VAC, 0.25 A a 125 VDC - Contatti in scambio (Comune, NA e NC) - SPDT
 - Connessione elettrica secondo norme DIN43650, M3 e M4
 - Connessione elettrica secondo norme IEC60947-5-2, M12
 - Protezione elettrica secondo norme DIN40050, IP65
 - Certificazione ATEX II 3G Ex nc IIB T6 Gc IP65
- Corpo: quadro 30x30mm in alluminio anodizzato
 Fori passanti per montaggio a pannello: Ø5,25mm, interasse 20mm

Garanzia: vedi pagina dedicata
 Parti di ricambio: vedi pagina dedicata

Disponibile:

- Pressioni massime speciali
- Connessioni elettriche speciali
- Valori di isteresi speciali
- CU-TR per mercato russo
- UL-CSA solo per parte elettrica

Technical features:

Working temperature: -25°C ÷ +85°C
 Switching frequency: 120 cycles/min
 Setting point: adjustable through internal screw or knob with locking screw
 Switching accuracy: ± 3% of end of scale at 20°C
 Fixed hysteresis value: -15% of end of scale at 20°C
 Weight: 0,15 Kg
 Mechanical life: 10⁶cycles at 70 bar (1000 PSI) at 20°C

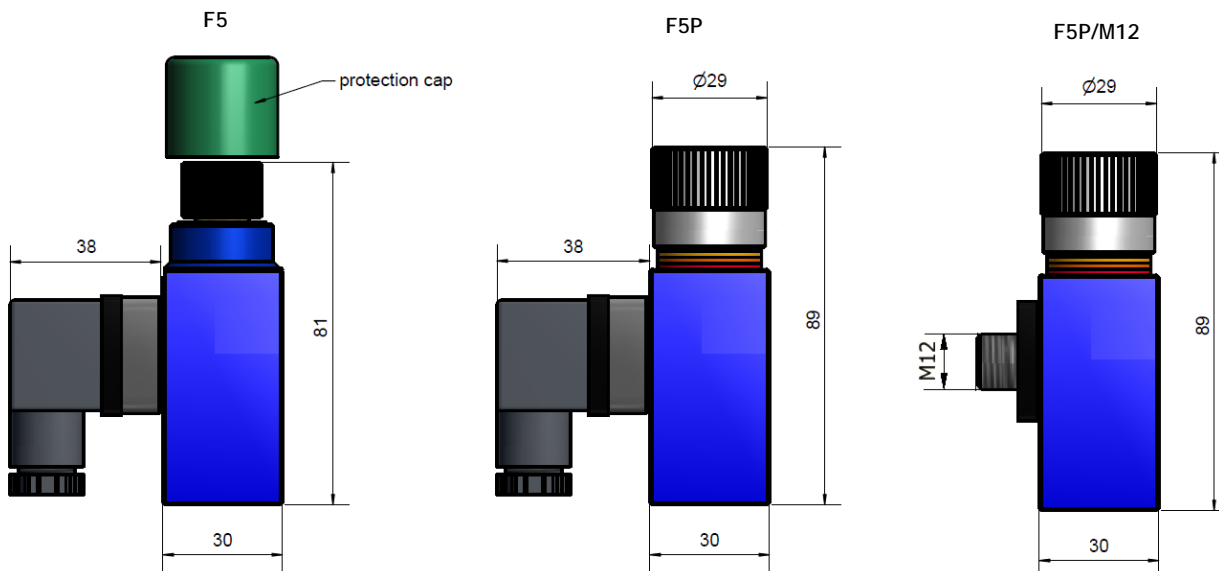
Electric features:

- Maximum load: 5 A at 250 VAC, 0.25 A at 125 VDC (- Exchange contacts (Common, NO and NC) - SPDT
 - Electric connection according to DIN43650, M3 and M4
 - Electric connection according to IEC60947-5-2, M12
 - Electric protection according to DIN40050, IP65
 - ATEX certification ATEX II 3G Ex nc IIB T6 Gc IP65
- Body: 30x30mm square in anodized aluminium
 Through holes for mounting on panel: Ø5,25mm wheelbase 20mm

Warranty: see dedicated page
 Spare parts: see dedicated page

Also available:

- Special max pressure
- Special electrical connection
- Special value of hysteresis
- CU-TR for Russian market
- UL-CSA for electric part only



F5.							/ .	.	/ .	..
Tipo	Campo di regolazione	Esecuzione	P max	Connessione Idraulica	Tipo di guarnizione	Tipologia microinterruttori	Pressione di taratura	Condizione	Tipologia di esecuzione	Tipologia connessione elettrica
Type	Switching Pressure range	Execution	P max	Hydraulic Connection	Type of seal	Type of Microswitches	Setting pressure	Condition	Type of execution	Type of electric connection
	Bar		Bar				Bar			
F53	5 > 50	Pistone Piston	300	¼" BSP-F	V VITON E EPDM se omissa indica NBR if omitted means NBR	G Contatti dorati Gold plated contacts se omissa indica contatti argentati if omitted means silver plated contacts	Se desiderato, Indicare il valore di taratura, insieme alla condizione "D" o "U" If requested, Indicate the value setting pressure, also indicate the condition "D" or "U"	D Taratura in discesa, comunicare anche il valore Means falling pressure setting, also please indicate the value U Taratura in salita, comunicare il valore Means rising pressure setting, also please indicate the value	P esecuzione con pomolo di regolazione Execution with regulation knob Se omissa indica versione standard if omitted means standard execution	M4 Connettore con segnale luminoso d'inserzione Connector with 24V led M12 Connessione Connection M12x1 (Connettore femmina escluso) (Female connector excluded) se omissa indica esecuzione M3 if omitted means M3 execution
F55	15 > 150	Pistone Piston	350							
F57	30 > 300	Pistone Piston	400							