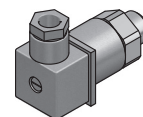
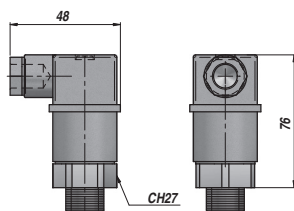


THERMOSTAT BIMETALLIQUE
BIMETALLIC THERMOSTAT

TM4



| Code Code | Type Type | Valeur d'intervention par défaut Fix set switching °C | Contact électrique Electric contact | P MAX bar | Filetage Thread BSP | kg |
|--------------|--------------|---|--|-----------------|---------------------------|------|
| ATTM44A100 | TM44 -A1 | 40 | NA = Normalement ouvert Normally Open | 200 | 1/2" | 0,07 |
| ATTM45A100 | TM45 -A1 | 50 | | | | 0,07 |
| ATTM46A100 | TM46 -A1 | 60 | | | | 0,07 |
| ATTM47A100 | TM47 -A1 | 70 | | | | 0,07 |
| ATTM48A100 | TM48 -A1 | 80 | | | | 0,07 |
| ATTM49A100 | TM49 -A1 | 90 | | | | 0,07 |
| ATTM490A10 | TM49.0-A1 | 100 | | | | 0,07 |
| ATTM491A10 | TM49.1-A1 | 110 | | | | 0,07 |
| ATTM492A10 | TM49.2-A1 | 120 | | | | 0,07 |

Température d'exercice - Working temperature : -20°C - +80°C

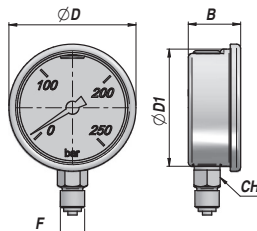
MATERIEL CORPS : LAITON
BODY MATERIAL : BRASS

MANOMETRE EN BAIN DE GLYCERINE - FIXATION RADIALE
GLYCERINE PRESSURE GAUGE - RADIAL FITTING

AMGR

EGALEMENT DISPONIBLE
AVEC FIXATION 'AXIALE'
Type "AMGP"

ALSO AVAILABLE
'AXIAL' FITTING "AMGP" Type



| Code Code | DN | F BSP | Echelle Range bar | B | CH | ØD | kg |
|--------------|-----|----------|-------------------------|------|----|-------|------|
| AMGR063010 | 63 | 1/4" | 0 / 10 | 28.0 | 14 | 68.0 | 0,20 |
| AMGR063025 | 63 | | 0 / 25 | | | | 0,20 |
| AMGR063060 | 63 | | 0 / 60 | | | | 0,20 |
| AMGR063100 | 63 | | 0 / 100 | | | | 0,20 |
| AMGR063160 | 63 | | 0 / 160 | | | | 0,20 |
| AMGR063250 | 63 | | 0 / 250 | | | | 0,20 |
| AMGR063400 | 63 | | 0 / 400 | | | | 0,20 |
| AMGR063600 | 63 | | 0 / 600 | | | | 0,20 |
| AMGR100010 | 100 | 1/2" | 0 / 10 | 33.9 | 17 | 109.8 | 0,40 |
| AMGR100025 | 100 | | 0 / 25 | | | | 0,40 |
| AMGR100060 | 100 | | 0 / 60 | | | | 0,40 |
| AMGR100100 | 100 | | 0 / 100 | | | | 0,40 |
| AMGR100160 | 100 | | 0 / 160 | | | | 0,40 |
| AMGR100250 | 100 | | 0 / 250 | | | | 0,40 |
| AMGR100400 | 100 | | 0 / 400 | | | | 0,40 |
| AMGR100600 | 100 | | 0 / 600 | | | | 0,40 |

Pour fixation 'AXIALE' remplacer le code "AMGR" par "AMGP", UNIQUEMENT sur Ø63 ! - For 'AXIAL' fitting replace the code "AMGR" by "AMGP", ONLY on Ø63 !

MATERIEL CORPS : BOITE INOX
BODY MATERIAL : STAINLESS STEEL CASING

Caratteristiche Tecniche:

Temperatura d'impiego: -20°C ÷ +120°C
 Valore fisso d'isteresi:
 TS4: ~ 6°C del valore impostato
 TF4-TM4-TM6: ~ 12°C del valore impostato
 Precisione d'intervento: ± 3,5°C
 Gradiente di temperatura max: 1°C/min
 Peso: TF4: 0,06 Kg / TS4: 0,08 Kg / TM4: 0,07 Kg / TM6: 0,17 Kg
 Corpo: in ottone esagonale CH24, 27 o 30 in base al tipo
 Caratteristiche elettriche:

- Protezione elettrica secondo norme CEI EN 60529:
 IP00 per TF4 versione standard
 IP54 per TF4 con il cappuccio di protezione P1
 IP65 per TM4, TM6 e TS4
- Attacco elettrico TF4: fast-on 6,3 x 0,8mm
- Attacco elettrico TM4/6-TS4: secondo norme DIN43650, M3 (connettore ruotabile di 360° su TM4)
- Massimo carico sui contatti TF4 - TM4/6:
 AC → 125V-15A / 220V-10A ----- DC → 12V-10A / 24V-5A
- Massimo carico sui contatti TS4:
 AC → 125V-3A / 30V-3A

Garanzia: vedi pagina dedicata

Parti di ricambio: vedi pagina dedicata

Disponibile:

- Connessioni elettriche speciali (DT04, DT062S WPC, ecc...)
- Valori di isteresi speciali
- CU-TR per mercato russo
- UL-CSA solo per parte elettrica, solo per versione TS
- Differenti valori di settaggio temperatura
- TM4/6 ATEX → II 3G Ex nc IIB T6 Gc IP65

Technical Features:

Working temperature: -20°C ÷ +120°C
 Fixed hysteresis value:
 TS4 ~ 6°C of the setting value
 TF4-TM4-TM6: ~ 12°C of the setting value
 Switching accuracy: ± 3,5°C
 Max temperature gradient: 1°C/min
 Weight: TF4: 0,06 Kg / TS4: 0,08 Kg / TM4: 0,07 Kg / TM6: 0,17 Kg
 Body: in brass hexagonal, KEY24, 27 or 30 in base of type
 Electric features:

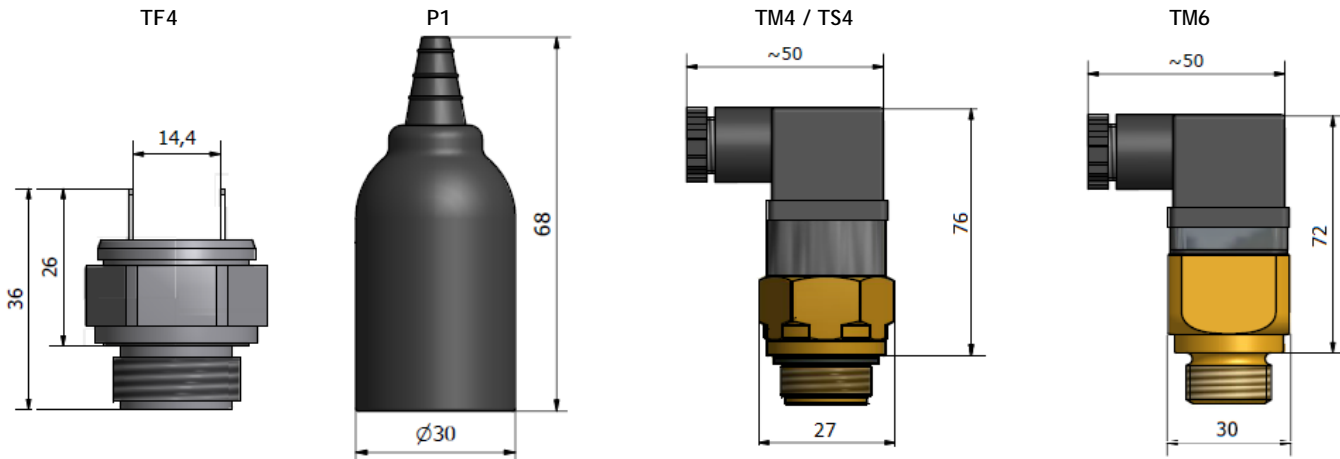
- Electric protection according to CEI EN 60529:
 IP00 for TF4 standard execution
 IP54 for TM4 and TM6 with rubber protection cup P1
 IP65 for TM4, TM6 and TS4
- Electric connection TF4: fast-on 6,3 x 0,8mm
- Electric connection TM4/6-TS4: according to DIN43650, M3 (360° rotatable connector on TM4)
- Maximum load on contacts TF4 - TM4/6:
 AC → 125V-15A / 220V-10A ----- DC → 12V-10A / 24V-5A
- Maximum load on contacts TS4:
 AC → 125V-3A / 30V-3A

Warranty: see dedicated page

Spare parts: see dedicated page

Available:

- Special electrical connection (DT04, DT062S WPC, etc...)
- Special value of hysteresis
- CU-TR for Russian market
- UL-CSA for electric part only, applicable on TS series only
- Different setting temperatures values
- TM4/6 ATEX → II 3G Ex nc IIB T6 Gc IP65




| TF - TM - TS. | | | | | | |
|-----------------|---------------------------|-------|-------------------------------------|--|---|---|
| Tipo | Valore fisso d'intervento | P Max | Tipologia contatto elettrico | Materiale del corpo | Connessione idraulica | Protezione |
| Type | Fix set switching | P Max | Type of electric contact | Body material | Hydraulic connection | Protection |
| | °C | | | | | |
| TF44 | 40 | 200 | A NA NO C NC NC | X AISI316L (lotto minimo) (minimum lot) Se omissso indica ottone If omitted means brass | 14 → ½" BSP-M - CH/ KEY24 17 → ½" BSP-M - CH/ KEY27 24 → ¾" BSP-M - CH/ KEY24 37 → M22x1.5-M - CH/ KEY27 | P1 Per proteggere lo strumento dallo sporco e dall'umidità To protect the instrument from dirty and humidity |
| TF45 | 50 | | | | | |
| TF46 | 60 | | | | | |
| TF47 | 70 | | | | | |
| TF48 | 80 | | | | | |
| TF49 | 90 | | | | | |
| TF49.0 | 100 | | | | | |
| TF49.1 | 110 | | | | | |
| TM44 - TM64 | 40 | 200 | A NA NO C NC NC | X AISI316L (lotto minimo) (minimum lot) Se omissso indica ottone If omitted means brass | 1 → ½" BSP-M 2 → ¾" BSP-M 3 → M22x1.5-M | IP67 Esecuzione con cavo elettrico resinato (solo TM4) Execution with resinated electric cable (only TM4) |
| TM45 - TM65 | 50 | | | | | |
| TM46 - TM66 | 60 | | | | | |
| TM47 - TM67 | 70 | | | | | |
| TM48 - TM68 | 80 | | | | | |
| TM49 - TM69 | 90 | | | | | |
| TM49.0 - TM69.0 | 100 | | | | | |
| TM49.1 - TM69.1 | 110 | | | | | |
| TM49.2 - TM69.2 | 120 | | | | | |
| TS44 | 40 | 200 | Contatti in scambio SPDT contact | Ottone Brass | 1 → ½" BSP-M - CH/ KEY24 2 → ¾" BSP-M - CH/ KEY24 3 → M22x1.5-M - CH/ KEY27 | - |
| TS45 | 50 | | | | | |
| TS46 | 60 | | | | | |
| TS47 | 70 | | | | | |
| TS48 | 80 | | | | | |


ATERODINxxxx


Thermostats






| DIN Type THERMOSTAT | MODEL "A" DIN Type - M22x1,5 | |
|---|------------------------------|----------|
|  | TER00DIN7080 | 70/80 °C |
| | TER00DIN6070 | 60/70 °C |
| | TER00DIN5060 | 50/60 °C |
| | TER00DIN4050 | 40/50 °C |

| FAST-ON Type THERMOSTAT | MODEL "B" FAST-ON Type UNCUFFED IP65 - M22x1,5 | |
|---|--|-------|
|  | TER453251T60 | 60 °C |
| | TER032503T50 | 50 °C |
| | TER032503T40 | 40 °C |

| FAST-ON Type THERMOSTAT | MODEL "C" FAST-ON Type - M22x1,5 | |
|---|----------------------------------|----------|
|  | TER012503T60 | 50/58 °C |
| | TER012503T48 | 40/48 °C |
| | TER012503T40 | 30/38 °C |

| ADJUSTABLE THERMOSTAT | ADJUSTABLE THERMOSTAT with GRADUATED KNOB 0-90 C° for single phase models 220V GR series | |
|---|---|--|
|  | TERVAR000900 | |

All the thermostats above are configured with **N.A. circuit** (Normal Open). The N.C. (Normal Close) configurations are provided only on request.