

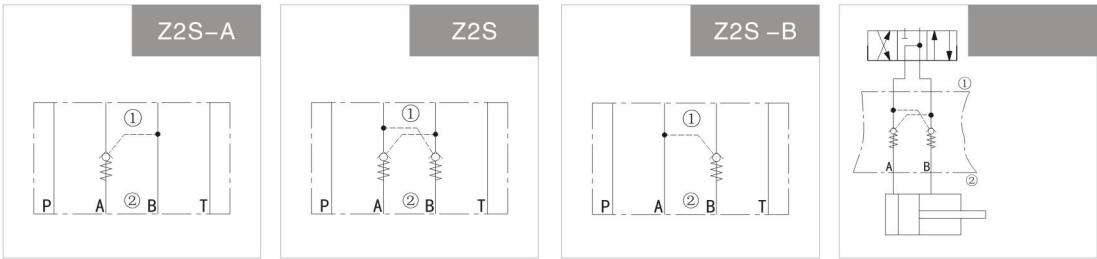
Z2S Series Modular Hydraulic Operated Check Valve

[Product Features]

Modular type
Mounting surface according to DIN24340 A type
ISO 4401 and CETOP RP121H
Used to close one or more chamber oil,
no leakage, good stability
Suitable for modular mounting



【graphic symbol】



[Model Code]

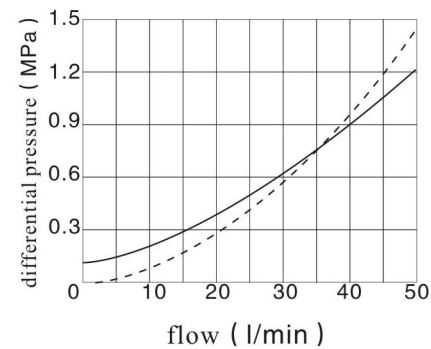
Z2S 10					
Modular hydraulic operated check valve					With detailed description
Size : 6=NG 6 10=NG10 16=NG16 22=NG22					No code=NBR seals V=FKM seals
No code =both chamber A and B have check valve A=chamber A with the check valve B=chamber B with the check valve					10 NG10 series number 30 NG16、22 series number 40 NG6 series number 10~19 series inner structure and connected dimension are same 30~39 series inner structure and connected dimension are same 40~49 series inner structure and connected dimension are same

[Technical Data]

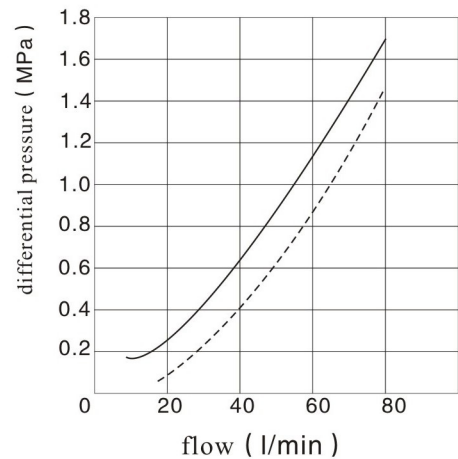
Working medium	Mineral hydraulic oil Phosphate hydraulic oil			
Working medium temperature range ℃	-20~+80			
Viscosity scope mm ² /s	2.8~500			
Oil flow direction	See the sign			
Operating pressure	31.5			
Check valve starting valve（MPa）positive circulation	Size 6: 0.15; Size 10.16: 0.1; Size 22: 0.25			
Drift diameter	6	10	16	22
Weight	0.8	2	11.7	11.7

【flow-pressure drop characteristic】

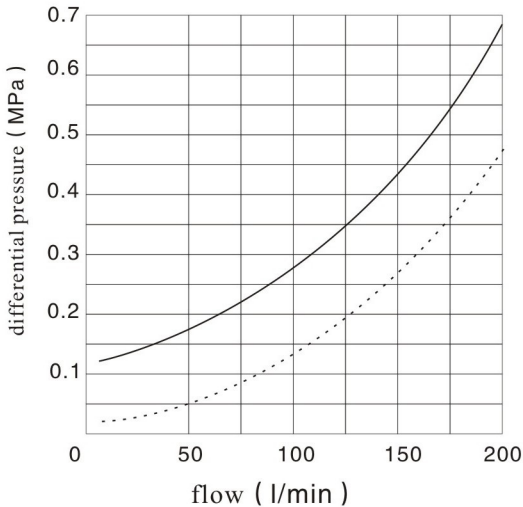
characteristic curve of ** type (Z2S6 type)
superposition style of hydraulic-control one-way valve



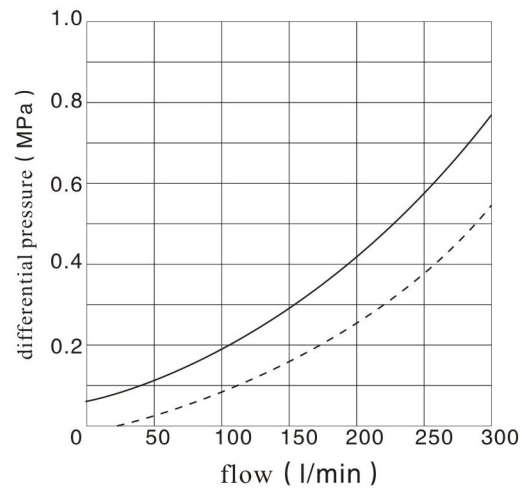
characteristic curve of ** type (Z2S10 type)
superposition style of hydraulic-control one-way valve



characteristic curve of ** type (Z2S16 type)
superposition style of hydraulic-control one-way valve

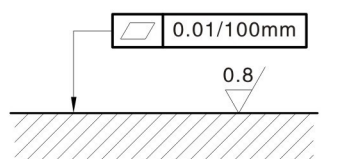
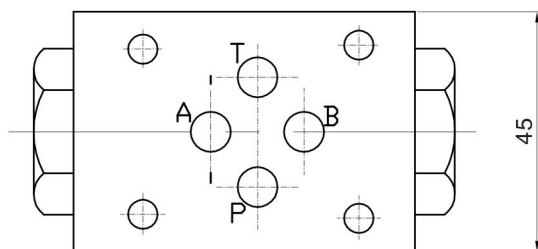
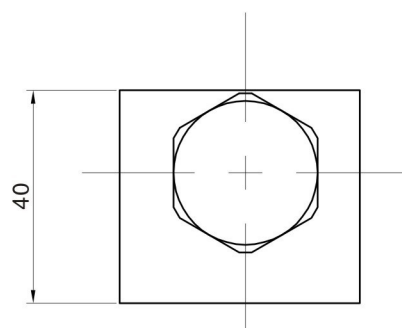


characteristic curve of ** type (Z2S22 type)
superposition style of hydraulic-control one-way valve



Notice: testing condition $v=36\text{mm}^2/\text{s}$; $t=50^\circ\text{C}$

Z2S6



Technical drawing of a rectangular plate with dimensions and labels. The overall dimensions are 40.5 (width) and 31 (height). The plate features four M5 holes, with a note indicating an effective depth of 10. The distance between the centers of the four holes is 27.8. The distance from the top edge to the center of the top two holes is 19. The distance from the right edge to the center of the right two holes is 10.3. The distance from the bottom edge to the center of the bottom two holes is 16.25. The distance from the left edge to the center of the left two holes is 5.95. The plate is labeled with 'A', 'B', 'P', and 'T' near the holes. A note at the bottom right indicates '4-φ 7.5max'.

Z2S10

