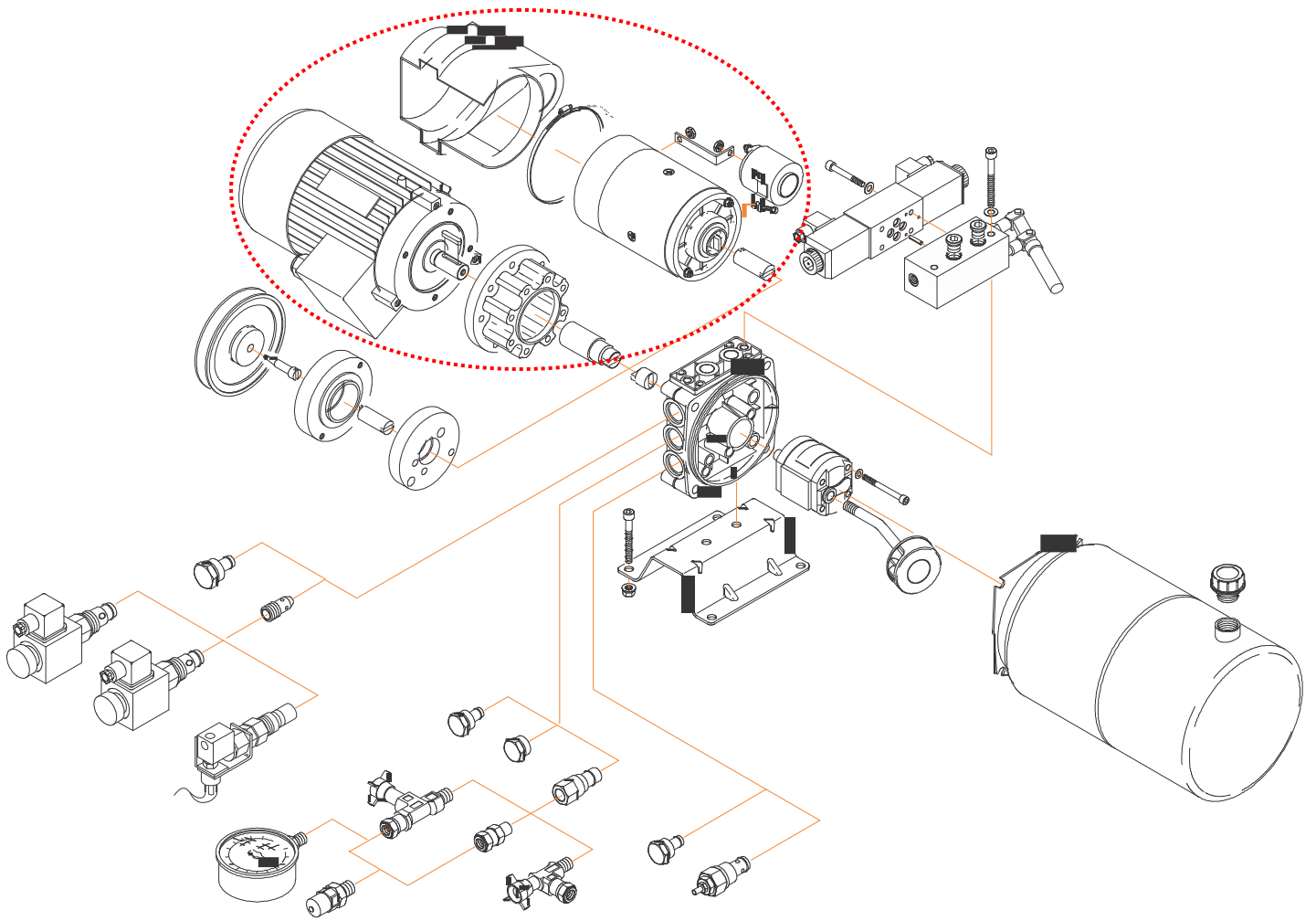




**MINICENTRALINA MULTIFUNZIONE** *MULTIFUNCTION POWER PACK*



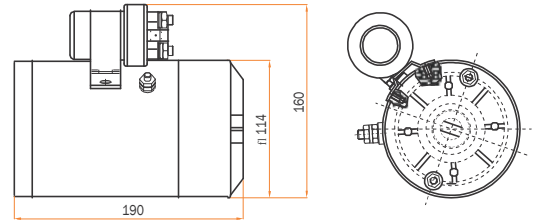


## MOTORI ELETTRICI *ELECTRIC MOTORS*

Codice Code	Descrizione Description	L (mm)	D (mm)
-------------	-------------------------	--------	--------

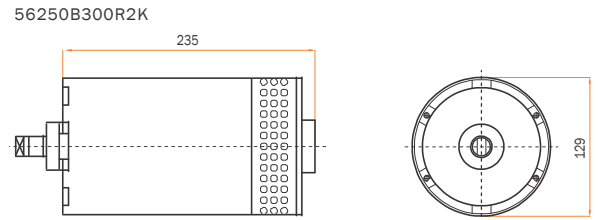
### Motori corrente continua con termocoppia e teleruttore *Direct current motors with thermocouple and start relay*

56250A180L0H	Motore Motor	12V 1800W*
56250B200L0H	Motore Motor	24V 2000W*
56250A160L2K	Motore Motor	AMJ-5197 12V 1,6KW
56250B220L2K	Motore Motor	AMJ-5196 24V 2,2KW



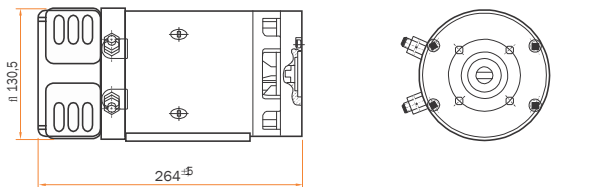
### Motori corrente continua ventilato e termocoppia *Fan D.C. motor and thermocouple*

56250A150M4F	Motore Motor	12V 1500W D.113 B14-71
4252BA200A2C	Motore Motor	12V 2000W D.113 B14-/1
56250B200M4F	Motore Motor	24V 2000W D.113 B14-/1
56250B300R2K	Motore Motor	AMK-5513 24V 3KW
4252BA250B2C	Motore Motor	12V 2500W D.125 B14/71
4252BB250B2C	Motore Motor	24V 2500W D.125 B14/71



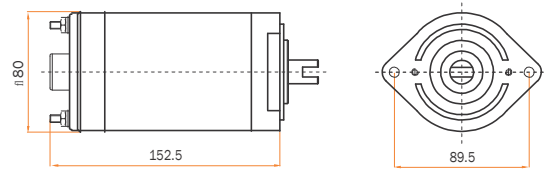
56250B300R2K

4252BA250B2C	Motore Motor	12V 2500W D.125 B14/71
4252BB250B2C	Motore Motor	24V 2500W D.125 B14/71



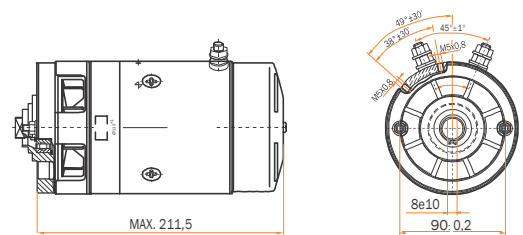
### Motori corrente continua senza teleruttore *Direct current motors without start relay*

56150A050E2K	Motore Motor	AME-1726 12V 0,5 KW
56150B050E0K	Motore Motor	AME-1557 24V 0,5KW
56150A080F1K	Motore Motor	AME-1707 12V 0,8KW
56150B080F1K	Motore Motor	AME-1709 24V 0,8KW



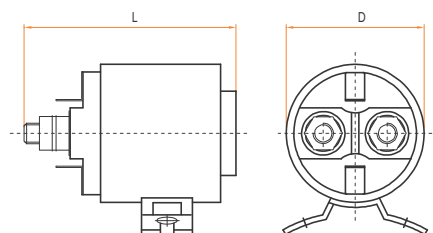
### Motori corrente continua ventilato senza termocoppia *Direct current fan motors without thermocouple*

56250A150L5K	Motore Motor	AMJ-5143 12V 1,5KW
56250B220L5K	Motore Motor	AMJ-5233 24V 2KW
42520ST2422K	Kit Termocoppia per motore	Motor thermocouple kit 12V-24V



### Teleruttore di avviamento *Starting relay*

56252120800K	Teleruttore Relay	12V 80A ARD1133	86	52
56252121500K	Teleruttore Relay	12V 150A RINF. ARD1139	100	52
56252240800K	Teleruttore Relay	24V 80A ARD1134	86	52
56252241500K	Teleruttore Relay	24V 150A RINF. ARD1138	100	52
56252243000K	Teleruttore Relay	24V 300A RINF. ARD1308	112,5	61





## MOTORI ELETTRICI ELECTRIC MOTORS

Codice Code	Descrizione Description	A (mm)	B (mm)	C (mm)
<b>Coperchio motore</b> Protection cover for motor				
56253010000H	Cuffia Cover UPE-9	189	164	
56253010000N	Cuffia Cover UPE-10*	180	118	204

\* Solo per motore / Only for motor 12V 1800W - 24V 2000W

### Motori corrente alternata trifasi

A.C. threephase motors 230-400 VOLT 50 Hz B14 2 POLI

42303210B11_	Motore Motor KW 0,37 B14 2p.230/400V 50Hz	219	137	108
42303210B21_	Motore Motor KW 0,55 B14 2p. 230/400V 50Hz	219	137	108
42303210C11_	Motore Motor KW 0,75 B14 2p. 230/400V 50Hz	233	156	122
42303210C21_	Motore Motor KW 1 B14 2p.230/400V 50Hz	233	156	122
42303210D11_	Motore Motor KW 1,5 B14 2p. 230/400V 50Hz	252	176	129
42303210D21_	Motore Motor KW 2,2 B14 2p. 230/400V 50Hz	276	176	129
42303210E11_	Motore Motor KW 3 B14 2p. 230/400V 50Hz	306	195	140
42303210F11_	Motore Motor KW 4 B14 2p 230/400V 50Hz	325	220	160

### Motori corrente alternata trifasi

A.C. threephase motors 230-400 VOLT 50 Hz B14 4 POLI

42303410B11_	Motore Motor KW 0,25 B14 4p. 230/400V 50Hz	219	137	108
42303410B21_	Motore Motor KW 0,37 B14 4p.230/400V 50Hz	219	137	108
42303410C11_	Motore Motor KW 0,55 B14 4p. 230/400V 50Hz	233	156	122
42303410C21_	Motore Motor KW 0,75 B14 4p. 230/400V 50Hz	233	156	122
42303410D11_	Motore Motor KW 1,1 B14 4p. 230/400V 50Hz	252	176	129
42303410D21_	Motore Motor KW 1,5 B14 4p. 230/400V 50Hz	276	176	129
42303410E11_	Motore Motor KW 2,2 B14 4p. 230/400V 50Hz	306	195	140
42303410E21_	Motore Motor KW 3 B14 4p. 230/400V 50Hz	306	195	140
42303410F11_	Motore Motor KW 4 B14 4p. 230/400V 50Hz	325	220	160

### Motori corrente alternata monofasi

A.C. singlephase motors 220 VOLT 50 Hz B14 2 POLI

42203210C21_	Motore Motor KW 0,55 B14 2p. 220V 50Hz	219	137	108
42203210D21_	Motore Motor KW 0,75 B14 2p. 220V 50Hz	233	156	122
42203210F11_	Motore Motor KW 1,1 B14 2p. 220V 50Hz	233	156	122
42203210G11_	Motore Motor KW 1,5 B14 2p. 220V 50Hz	252	176	129
42203210L11_	Motore Motor KW 2,2 B14 2p. 220V 50Hz	276	176	129

### Motori corrente alternata monofasi

A.C. singlephase motors 220 VOLT 50 Hz B14 4 POLI

42203410C11_	Motore Motor KW 0,25 B14 4p. 220V 50Hz	219	137	108
42203410D11_	Motore Motor KW 0,37 B14 4p. 220V 50Hz	219	137	108
42203410D21_	Motore Motor KW 0,55 B14 4p. 220V 50Hz	233	156	122
42203410E21_	Motore Motor KW 0,75 B14 4p. 220V 50Hz	233	156	122
42203410G21_	Motore Motor KW 1,1 B14 4p. 220V 50Hz	252	176	129
42203410G31_	Motore Motor KW 1,5 B14 4p. 220V 50Hz	276	176	129