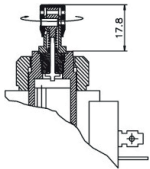
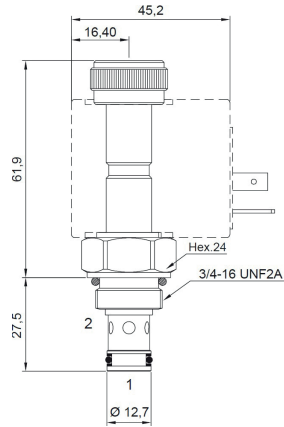


Type "0502.1 -- 5" / SAE 8
"0502.1 -- 5" Type / SAE 8

avec Cde manuelle de secours
with safety manual override



Push and
Twist



Code Code	Type Type	Tension Voltage	Position non piloté Unpowered position	Symbole Hydraulique Hydraulic Symbol	Q MAX l/min	P MAX bar	kg
CARTOUCHE SEUL - CARTRIDGE ONLY							
HRV0502100500	0502.1 -- 5 / SAE 8		NORMALEMENT FERME (NC)		20	250	0,14

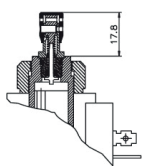
SOLENOIDE SEUL - SOLENOID ONLY

HRV094001000	94001	12 VDC					0,16
HRV094002000	94002	24 VDC					0,16
HRV093007130	9300713	24V RAC					0,16

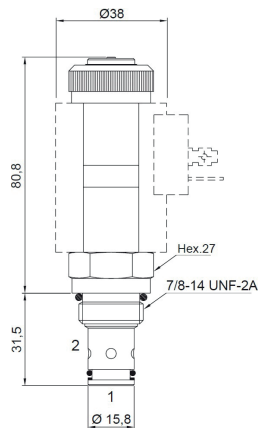
BLOC FORE ALUMINIUM ORIFICE 3/8" ET 1/2" TENU EN STOCK - ALUMINUM BLOCK 3/8" AND 1/2" ORIFICE IN STOCK

Type "0553.0 -- 4" / SAE 10
"0553.0 -- 4" Type / SAE 10

avec Cde manuelle de secours
with safety manual override

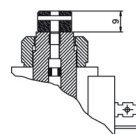


Push
Button

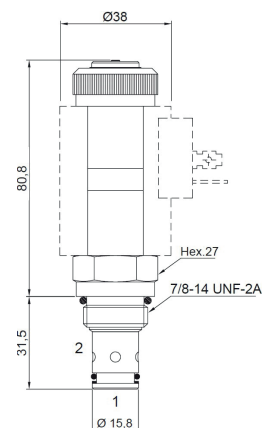


Type "0553.1 -- 6" / SAE 10
"0553.1 -- 6" Type / SAE 10

avec Cde manuelle de secours
with safety manual override



Unscrew type



Code Code	Type Type	Tension Voltage	Position non piloté Unpowered position	Symbole Hydraulique Hydraulic Symbol	Q MAX l/min	P MAX bar	kg
CARTOUCHE SEUL - CARTRIDGE ONLY							
HRV0553000400	0553.0 -- 4 / SAE 10		NORMALEMENT OUVERTE (NO)		60	350	0,28
HRV0553100600	0553.1 -- 6 / SAE 10		NORMALEMENT FERME (NC)		60	350	0,28

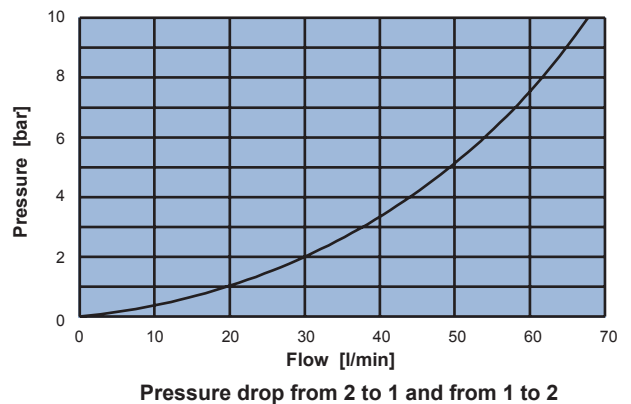
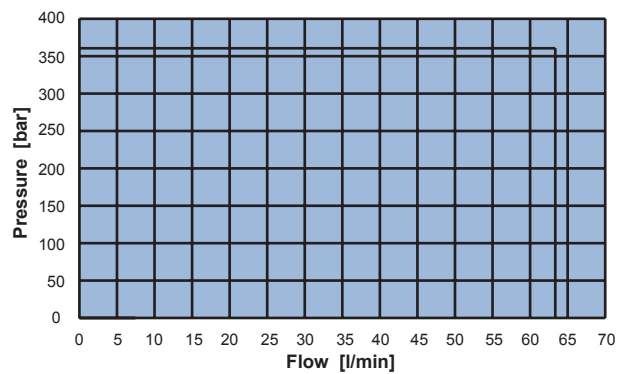
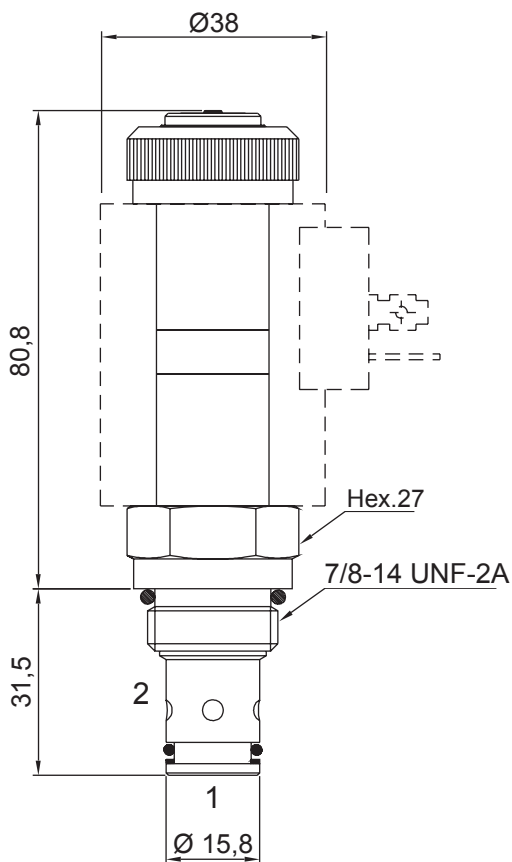
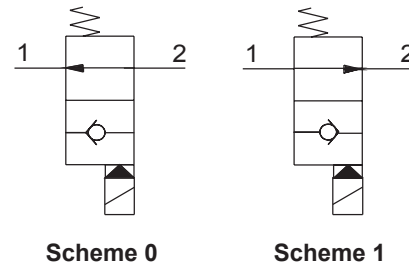
SOLENOIDE SEUL - SOLENOID ONLY

HRV0980111900	9801119	12 VDC					0,24
HRV0980121900	9801219	24 VDC					0,24
HRV0980161900	9801619	220V RAC					0,24

BLOC FORE ALUMINIUM ORIFICE 3/8" ET 1/2" TENU EN STOCK - ALUMINUM BLOCK 3/8" AND 1/2" ORIFICE IN STOCK

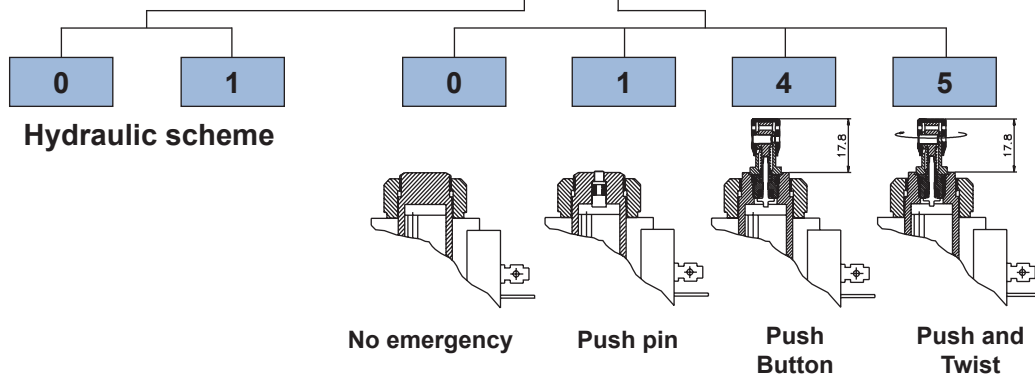
2 WAY 2 POSITION ELECTRIC POPPET VALVE, PILOT OPERATED NO

- Flow **60 l/min**
- Max working pressure **350 bar**
- Leakage **0,25 cc/min**
- Seals **NBR and PTFE**
- Cartridge tightening torque **40 Nm**
- Ring nut tightening torque **.5 Nm**
- Weight (with coil) **0,56 Kg**
- Cavity **C230000** page 210
- Body **171302** page 191
- Coil (to be ordered separately) **09801** page 181



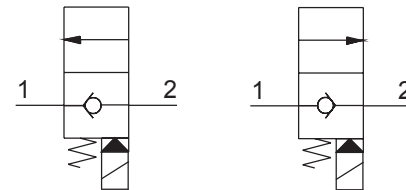
Ordering code

0 5 5 3 0

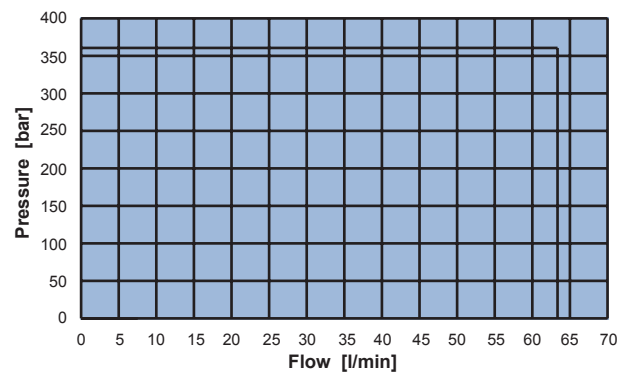
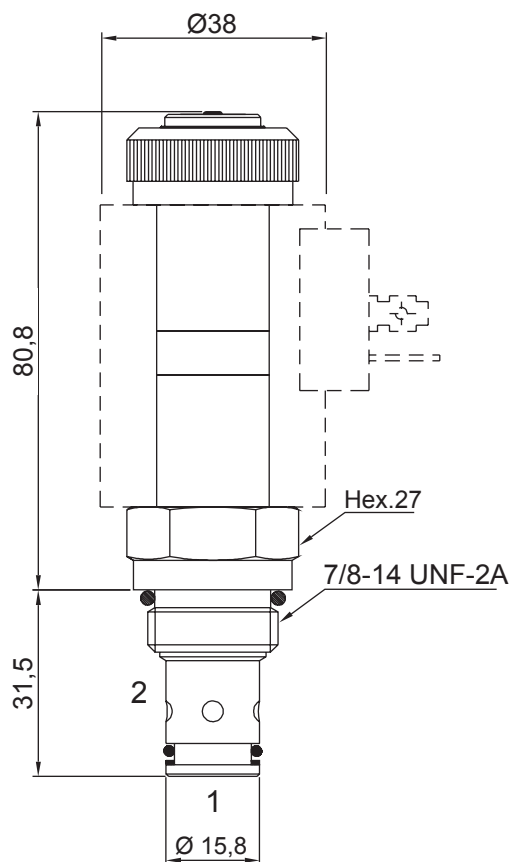


2 WAY 2 POSITION ELECTRIC POPPET VALVE, PILOT OPERATED NC

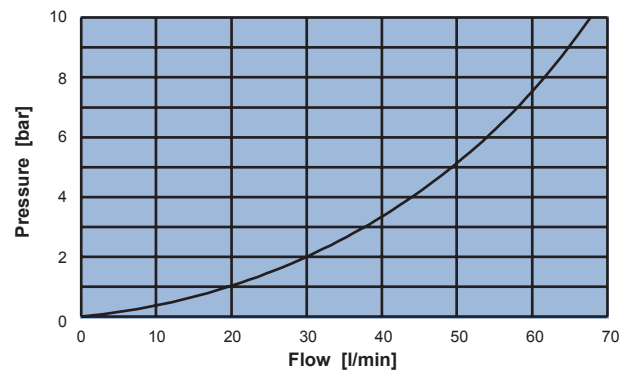
- Flow **60 l/min**
- Max working pressure **350 bar**
- Leakage **0,25 cc/min**
- Seals **NBR and PTFE**
- Cartridge tightening torque **40 Nm**
- Ring nut tightening torque **5 Nm**
- Weight (with coil)..... **0,56 Kg**
- Cavity **C230000** page **210**
- Body..... **171302** page **191**
- Coil (to be ordered separately) **09801** page **181**



Scheme 0 **Scheme 1**



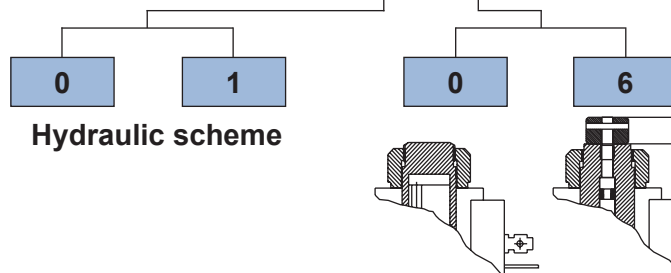
Application limits from 2 to 1 and 1 to 2



Pressure drop from 2 to 1 and from 1 to 2

Ordering code

0 5 5 3 1



No emergency **Unscrew type**