

# DEVIATORI DI FLUSSO A 3 VIE ALTA PRESSIONE IN ACCIAIO

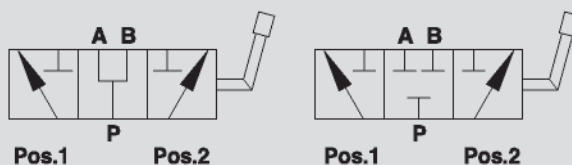
## HIGH PRESSURE 3 WAYS DIVERTER VALVES, STEEL BODY

V0870 PXXXXX



SCHEMA IDRAULICO  
(con centro aperto)  
HYDRAULIC DIAGRAM  
(open centre)

TIPO / TYPE  
**DF AP**  
A RICHIESTA  
(con centro chiuso)  
ON REQUEST  
(closed centre)



### IMPIEGO:

Valvole utilizzate per deviare il flusso in ingresso verso due bocche d'uscita.

### MATERIALI E CARATTERISTICHE:

Corpo: acciaio.

Componenti interni: acciaio temprato termicamente e rettificato.

Guarnizioni: BUNA N standard e anelli antiestrusione.

Tenuta: trafilamento trascurabile.

### MONTAGGIO:

Collegare P all'alimentazione e le bocche A e B ai rami del circuito idraulico a cui si vuole deviare il flusso. Con leva in pos. 1 si alimenta la bocca A, con leva in pos. 2 si alimenta la bocca B. Con leva in posizione centrale le bocche P, A e B sono tutte collegate (centro aperto).

### A RICHIESTA:

- Centro chiuso (CODICE/CC)

### USE AND OPERATION:

Diverter valve is used to divert the flow to two different outlets.

### MATERIALS AND FEATURES:

Body: steel.

Internal parts: hardened and ground steel.

Seals: BUNA N standard and anti-extrusion rings.

Leakage: Minimal leakage.

### CONNECTIONS:

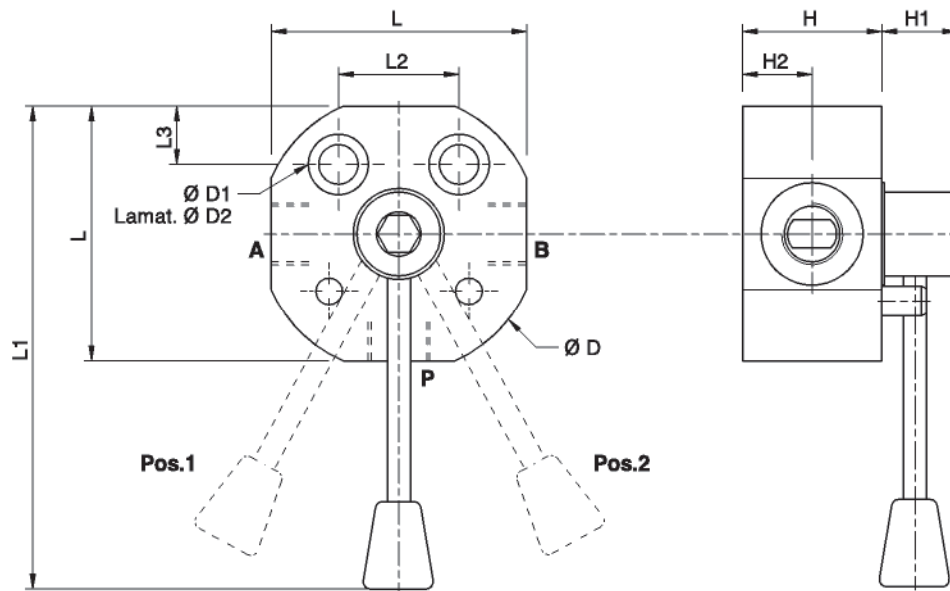
Connect P to the supply, A and B to the ports of the hydraulic circuit where flow has to be diverted to. With lever in position 1 the flow is connected to port A; with lever in position 2, the flow is connected to port B. With lever in the central position ports P, A and B are all connected (open centre).

### ON REQUEST:

- Closed centre (CODE/CC)

V0879.APXXXXX

| CODICE<br>CODE  | SIGLA<br>TYPE         | PORTATA MAX<br>MAX FLOW<br>Lt. / min | PRESSIONE MAX<br>MAX PRESSURE<br>Bar |
|-----------------|-----------------------|--------------------------------------|--------------------------------------|
| <b>V0879/AP</b> | DF 3 VIE 1/4" AP ACC. | 40                                   | 500                                  |
| <b>V0881/AP</b> | DF 3 VIE 3/8" AP ACC. | 60                                   | 500                                  |
| <b>V0891/AP</b> | DF 3 VIE 1/2" AP ACC. | 90                                   | 500                                  |
| <b>V0901/AP</b> | DF 3 VIE 3/4" AP ACC. | 120                                  | 500                                  |
| <b>V0911/AP</b> | DF 3 VIE 1" AP ACC.   | 180                                  | 500                                  |



16

| CODICE<br>CODE  | SIGLA<br>TYPE         | A-B<br>P<br>GAS | L<br>mm | L1<br>mm | L2<br>mm | L3<br>mm | D<br>mm | D1<br>mm | D2<br>mm | H<br>mm | H1<br>mm | H2<br>mm |
|-----------------|-----------------------|-----------------|---------|----------|----------|----------|---------|----------|----------|---------|----------|----------|
| <b>V0879/AP</b> | DF 3 VIE 1/4" AP ACC. | 1/4"            | 60      | 155      | 30       | 10       | /       | 8,5      | 13,5     | 42,5    | 21       | 20       |
| <b>V0881/AP</b> | DF 3 VIE 3/8" AP ACC. | 3/8"            | 56      | 148      | 26       | 10       | 62      | 8,5      | 13,5     | 42,5    | 21       | 23,5     |
| <b>V0891/AP</b> | DF 3 VIE 1/2" AP ACC. | 1/2"            | 70      | 160      | 32       | 11       | 75      | 9,5      | /        | 38      | 25       | 19       |
| <b>V0901/AP</b> | DF 3 VIE 3/4" AP ACC. | 3/4"            | 80      | 165      | 32       | 11       | 100     | 10,5     | 17       | 58      | 20       | 31       |
| <b>V0911/AP</b> | DF 3 VIE 1" AP ACC.   | 1"              | 90      | 170      | 32       | 11       | 108     | 10,5     | 17       | 62      | 20       | 33       |