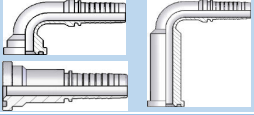
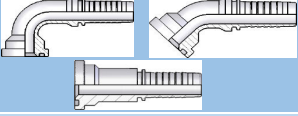
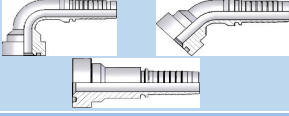
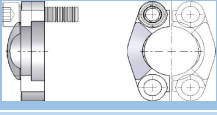
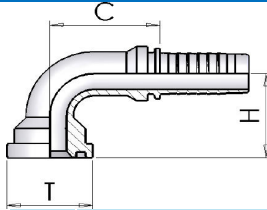


EMBOUS A BRIDES & BRIDES SAE  
CRIMP FITTINGS FLANGE & FLANGE SAE

	Description - Description	Type	Page
	<p>EMBOUT STANDARD BRIDE SAE 3000 CRIMP FITTING SAE FLANGE 3000</p>	<p>R1060, R1160 R1260, RFS3L</p>	<p>42</p>
	<p>EMBOUT STANDARD BRIDE SAE 6000 CRIMP FITTING SAE FLANGE 6000</p>	<p>R1110, R1210 R1310, RFS6L</p>	<p>43</p>
	<p>EMBOUT STANDARD BRIDE SUPERCAT CRIMP FITTING CAT FLANGE</p>	<p>R0110S, R0120S R0130S</p>	<p>44</p>
	<p>DEMI-BRIDE SAE 3000 &amp; SAE 6000 CUT SPLIT FLANGE SAE 3000 &amp; SAE 6000</p>	<p>R5003, R5006</p>	<p>45</p>

**R1060**

90° COUDE BRIDE SAE 3000 PSI MONOBLOC  
90° SAE FLANGE 3000 PSI

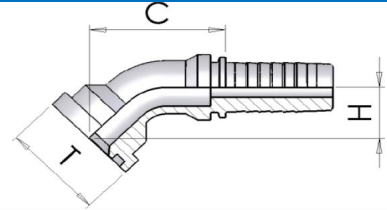


Code	Type	Tuyau ID		Dimensions		
		in	TAILLE	T	H	C
R1060.0808	1060-08-08	1/2	8	1/2	30,2	39
R1060.0812	1060-08-12	1/2	8	3/4	38,1	39
R1060.1008	1060-10-08	5/8	10	1/2	30,2	45
R1060.1012	1060-10-12	5/8	10	3/4	38,1	45
R1060.1212	1060-12-12	3/4	12	3/4	38,1	56
R1060.1216	1060-12-16	3/4	12	1	44,5	56
R1060.1616	1060-16-16	1	16	1	44,5	70
R1060.1620	1060-16-20	1	16	1.1/4	50,8	70
R1060.1624	1060-16-24	1	16	1.1/2	60,3	72
R1060.2016	1060-20-16	1.1/4	20	1	44,5	81
R1060.2020	1060-20-20	1.1/4	20	1.1/4	50,8	86
R1060.2024	1060-20-24	1.1/4	20	1.1/2	60,3	85
R1060.2424	1060-24-24	1.1/2	24	1.1/2	60,3	98
R1060.2432	1060-24-32	1.1/2	24	2	71,4	93
R1060.3232	1060-32-32	2	32	2	71,4	123

AUTRES DIMENSIONS CONSULTER NOTRE SITE INTERNET / OTHER DIMENSIONS CONSULT OUR WEBSITE

**R1160**

45° COUDE BRIDE SAE 3000 PSI MONOBLOC  
45° SAE FLANGE 3000 PSI



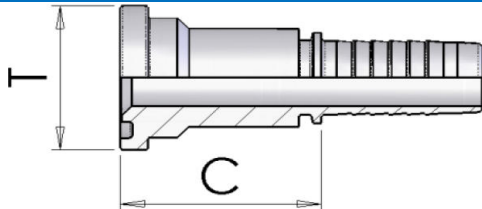
Code	Type	Tuyau ID		Dimensions			
		in	TAILLE	T	mm	C	H
R1160.0808	1160-08-08	1/2	8	1/2	30,2	62	22
R1160.0812	1160-08-12	1/2	8	3/4	38,1	67	25
R1160.1212	1160-12-12	3/4	12	3/4	38,1	69	27
R1160.1216	1160-12-16	3/4	12	1	44,5	88	30
R1160.1616	1160-16-16	1	16	1	44,5	82	33
R1160.2020	1160-20-20	1.1/4	20	1.1/4	50,8	102	38
R1160.2024	1160-20-24	1.1/4	20	1.1/2	60,3	129	39
R1160.2424	1160-24-24	1.1/2	24	1.1/2	60,3	114	44
R1160.2432	1160-24-32	1.1/2	24	2	71,4	148	47
R1160.3232	1160-32-32	2	32	2	71,4	130	58

AUTRES DIMENSIONS CONSULTER NOTRE SITE INTERNET / OTHER DIMENSIONS CONSULT OUR WEBSITE

MATERIEL : ACIER (SUR DEMANDE : ACIER INOX AISI 316) - MATERIAL : STEEL (ON REQUEST : STAINLESS STEEL AISI 316°

**R1260**

DROIT BRIDE SAE 3000 PSI MONOBLOC  
STRAIGHT SAE FLANGE 3000 PSI

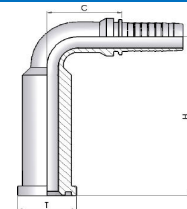


Code	Type	Tuyau ID		Dimensions		
		in	TAILLE	T	mm	C
R1260.0808	1260-08-08	1/2	8	1/2	30,2	45
R1260.0812	1260-08-12	1/2	8	3/4	38,1	50
R1260.1008	1260-10-08	5/8	10	1/2	30,2	45
R1260.1012	1260-10-12	5/8	10	3/4	38,1	49
R1260.1212	1260-12-12	3/4	12	3/4	38,1	50
R1260.1216	1260-12-16	3/4	12	1	44,5	53
R1260.1616	1260-16-16	1	16	1	44,5	54
R1260.1620	1260-16-20	1	16	1.1/4	50,8	57
R1260.2020	1260-20-20	1.1/4	20	1.1/4	50,8	59
R1260.2024	1260-20-24	1.1/4	20	1.1/2	60,3	62
R1260.2424	1260-24-24	1.1/2	24	1.1/2	60,3	62
R1260.2432	1260-24-32	1.1/2	24	2	71,4	67
R1260.3232	1260-32-32	2	32	2	71,4	68
R1260.3240	1260-32-40	2	32	2.1/2	84,1	76
R1260.4040	1260-40-40	2.1/2	40	2.1/2	84	76
R1260.4848	1260-48-48	3	48	3	102	63

AUTRES DIMENSIONS CONSULTER NOTRE SITE INTERNET / OTHER DIMENSIONS CONSULT OUR WEBSITE

**RFS3L**

90° COUDE BRIDE SAE 3000 PSI MONOBLOC PROLONGEE  
90° SAE FLANGE 3000 PSI - LONG DROP



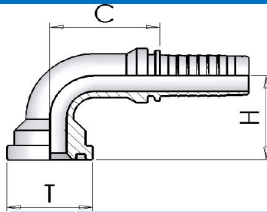
Code	Type	Tuyau ID		Dimensions		
		in	TAILLE	T	H	C
RFS3L.0808	FS3L-08-08	1/2	8	1/2	30,2	39
RFS3L.1212	FS3L-12-12	3/4	12	3/8	38,1	56
RFS3L.1616	FS3L-16-16	1	16	1	44,5	70
RFS3L.2020	FS3L-20-20	1.1/4	20	1.1/4	50,8	85
RFS3L.2424	FS3L-24-24	1.1/2	24	1.1/2	60,3	99

AUTRES DIMENSIONS CONSULTER NOTRE SITE INTERNET / OTHER DIMENSIONS CONSULT OUR WEBSITE

MATERIEL : ACIER (SUR DEMANDE : ACIER INOX AISI 316) - MATERIAL : STEEL (ON REQUEST : STAINLESS STEEL AISI 316°

**R1110**

90° COUDE BRIDE SAE 6000 PSI MONOBLOC  
90° SAE FLANGE 6000 PSI

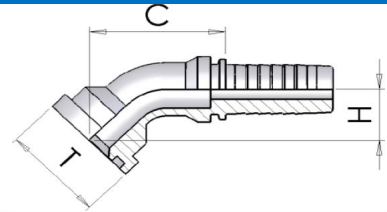


Code	Type	Tuyau ID		Dimensions		
		in	TAILLE	T	H	C
R1110.0808	1110-08-08	1/2	8	1/2	31,8	39
R1110.0812	1110-08-12	1/2	8	3/4	41,3	39
R1110.1008	1110-10-08	5/8	10	1/2	31,8	45
R1110.1012	1110-10-12	5/8	10	3/4	41,3	44
R1110.1016	1110-10-16	5/8	10	1	47,6	45
R1110.1208	1110-12-08	3/4	12	1/2	31,8	56
R1110.1212	1110-12-12	3/4	12	3/4	41,3	56
R1110.1216	1110-12-16	3/4	12	1	47,6	56
R1110.1612	1110-16-12	1	16	3/4	41,3	68
R1110.1616	1110-16-16	1	16	1	47,6	70
R1110.1620	1110-16-20	1	16	1.1/4	54	71
R1110.2020	1110-20-20	1.1/4	20	1.1/4	54	97
R1110.2024	1110-20-24	1.1/4	20	1.1/2	63,5	97
R1110.2424	1110-24-24	1.1/2	24	1.1/2	63,5	102
R1110.2432	1110-24-32	1.1/2	24	2	79,4	103
R1110.3232	1110-32-32	2	32	2	79,4	125

AUTRES DIMENSIONS CONSULTER NOTRE SITE INTERNET / OTHER DIMENSIONS CONSULT OUR WEBSITE

**R1210**

45° COUDE BRIDE SAE 6000 PSI MONOBLOC  
45° SAE FLANGE 6000 PSI



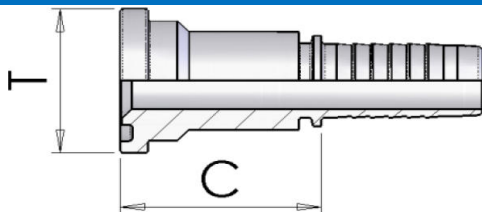
Code	Type	Tuyau ID		Dimensions		
		in	TAILLE	T	H	C
R1210.0808	1210-08-08	1/2	8	1/2	31,8	62
R1210.0812	1210-08-12	1/2	8	3/4	41,3	69
R1210.1008	1210-10-08	5/8	10	1/2	31,8	66
R1210.1012	1210-10-12	5/8	10	3/4	41,3	75
R1210.1016	1210-10-16	5/8	10	1	47,6	77
R1210.1212	1210-12-12	3/4	12	3/4	41,3	74
R1210.1216	1210-12-16	3/4	12	1	47,6	90
R1210.1612	1210-16-12	1	16	3/4	41,3	101
R1210.1616	1210-16-16	1	16	1	47,6	86
R1210.1620	1210-16-20	1	16	1.1/4	54	112
R1210.2020	1210-20-20	1.1/4	20	1.1/4	54	107
R1210.2024	1210-20-24	1.1/4	20	1.1/2	63,5	149
R1210.2424	1210-24-24	1.1/2	24	1.1/2	63,5	122
R1210.2432	1210-24-32	1.1/2	24	2	79,4	163
R1210.3232	1210-32-32	2	32	2	79,4	145

AUTRES DIMENSIONS CONSULTER NOTRE SITE INTERNET / OTHER DIMENSIONS CONSULT OUR WEBSITE

MATERIEL : ACIER (SUR DEMANDE : ACIER INOX AISI 316) - MATERIAL : STEEL (ON REQUEST : STAINLESS STEEL AISI 316°

**R1310**

DROIT BRIDE SAE 6000 PSI MONOBLOC  
STRAIGHT SAE FLANGE 6000 PSI

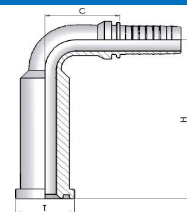


Code	Type	Tuyau ID		Dimensions		
		in	TAILLE	T	mm	C
R1310.0808	1310-08-08	1/2	8	1/2	31,8	46
R1310.0812	1310-08-12	1/2	8	3/4	41,3	53
R1310.1008	1310-10-08	5/8	10	1/2	31,8	46
R1310.1012	1310-10-12	5/8	10	3/4	41,3	53
R1310.1016	1310-10-16	5/8	10	1	47,6	59
R1310.1212	1310-12-12	3/4	12	3/4	41,3	54
R1310.1216	1310-12-16	3/4	12	1	47,6	60
R1310.1612	1310-16-12	1	16	3/4	41,3	55
R1310.1616	1310-16-16	1	16	1	47,6	61
R1310.1620	1310-16-20	1	16	1.1/4	54	68
R1310.2020	1310-20-20	1.1/4	20	1.1/4	54	70
R1310.2024	1310-20-24	1.1/4	20	1.1/2	63,5	76
R1310.2424	1310-24-24	1.1/2	24	1.1/2	63,5	76
R1310.2432	1310-24-32	1.1/2	24	2	79,4	85
R1310.3232	1310-32-32	2	32	2	79,4	85

AUTRES DIMENSIONS CONSULTER NOTRE SITE INTERNET / OTHER DIMENSIONS CONSULT OUR WEBSITE

**RFS6L**

90° COUDE BRIDE SAE 6000 PSI MONOBLOC PROLONGEE  
90° SAE FLANGE 6000 PSI - LONG DROP



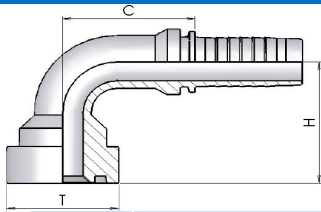
Code	Type	Tuyau ID		Dimensions		
		in	TAILLE	T	H	C
RFS6L.0808	FS6L-08-08	1/2	8	1/2	32	40
RFS6L.1212	FS6L-12-12	3/4	12	3/4	41,3	56
RFS6L.1616	FS6L-16-16	1	16	1	47,6	70
RFS6L.2020	FS6L-20-20	1.1/4	20	1.1/4	54	82
RFS6L.2424	FS6L-24-24	1.1/2	24	1.1/2	63,5	99

AUTRES DIMENSIONS CONSULTER NOTRE SITE INTERNET / OTHER DIMENSIONS CONSULT OUR WEBSITE

MATERIEL : ACIER (SUR DEMANDE : ACIER INOX AISI 316) - MATERIAL : STEEL (ON REQUEST : STAINLESS STEEL AISI 316°

**R0110S**

90° COUDE BRIDE SUPERCAT MONOBLOC  
90° 'CAT' FLANGE

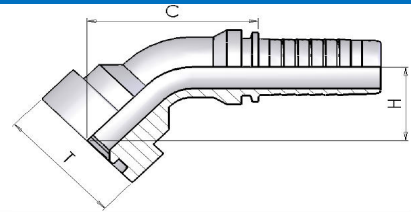


Code	Type	Tuyau ID		Dimensions				
		in	mm	TAILLE	T	mm	C	H
R0110S1212	110S-12-12	3/4	19	12	3/4	41,3	56	62
R0110S1216	110S-12-16	3/4	19	12	1	47,6	56	65
R0110S1616	110S-16-16	1	25,4	16	1	47,6	78	74
R0110S1620	110S-16-20	1	25,4	16	1.1/4	54	78	80
R0110S2020	110S-20-20	1.1/4	31,8	20	1.1/4	54	97	90
R0110S2024	110S-20-24	1.1/4	31,8	20	1.1/2	63,5	96	95
R0110S2424	110S-24-24	1.1/2	38,1	24	1.1/2	63,5	115	104

AUTRES DIMENSIONS CONSULTER NOTRE SITE INTERNET / OTHER DIMENSIONS CONSULT OUR WEBSITE

**R0120S**

45° COUDE BRIDE SUPERCAT MONOBLOC  
45° 'CAT' FLANGE



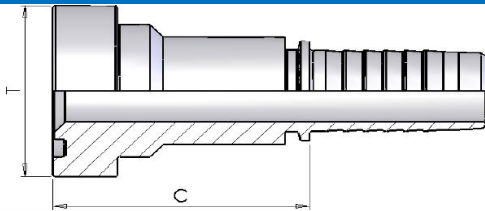
Code	Type	Tuyau ID		Dimensions				
		in	mm	TAILLE	T	mm	C	H
R0120S1212	120S-12-12	3/4	19	12	3/4	41,3	88	32
R0120S1216	120S-12-16	3/4	19	12	1	47,6	93	37
R0120S1616	120S-16-16	1	25,4	16	1	47,6	118	40
R0120S1620	120S-16-20	1	25,4	16	1.1/4	54	122	44
R0120S2020	120S-20-20	1.1/4	31,8	20	1.1/4	54	146	44
R0120S2024	120S-20-24	1.1/4	31,8	20	1.1/2	63,5	149	48
R0120S2424	120S-24-24	1.1/2	38,1	24	1.1/2	63,5	172	52

AUTRES DIMENSIONS CONSULTER NOTRE SITE INTERNET / OTHER DIMENSIONS CONSULT OUR WEBSITE

MATERIEL : ACIER (SUR DEMANDE : ACIER INOX AISI 316) - MATERIAL : STEEL (ON REQUEST : STAINLESS STEEL AISI 316°

**R0130S**

DROIT BRIDE SUPERCAT MONOBLOC  
STRAIGHT 'CAT' FLANGE



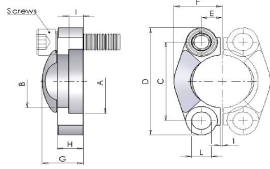
Code	Type	Tuyau ID		Dimensions			
		in	mm	TAILLE	T	mm	C
R0130S1212	130S-12-12	3/4	19	12	3/4	41,3	58
R0130S1216	130S-12-16	3/4	19	12	1	47,6	64
R0130S1616	130S-16-16	1	25,4	16	1	47,6	65
R0130S1620	130S-16-20	1	25,4	16	1.1/4	54	73
R0130S2020	130S-20-20	1.1/4	31,8	20	1.1/4	54	74
R0130S2024	130S-20-24	1.1/4	31,8	20	1.1/2	63,5	78
R0130S2424	130S-24-24	1.1/2	38,1	24	1.1/2	63,5	80

AUTRES DIMENSIONS CONSULTER NOTRE SITE INTERNET / OTHER DIMENSIONS CONSULT OUR WEBSITE

MATERIEL : ACIER (SUR DEMANDE : ACIER INOX AISI 316) - MATERIAL : STEEL (ON REQUEST : STAINLESS STEEL AISI 316°

DEMI-BRIDE SAE 3000  
CUT SPLIT FLANGES - 3000 PSI

**R5003**

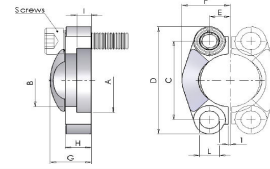


Code	Type	Dimensions										
		A	B	C	D	E	F	G	I	L	H	TAILLE
R5003.0800	S003-08	30,96	24,3	38,1	54	8,7	22,8	19	6,2	88	13	1/2"
R5003.1200	S003-12	38,89	32,1	47,6	65	11,1	25,9	22	6,2	108	14	3/4"
R5003.1600	S003-16	45,24	38,5	52,4	70	13,1	29,2	24	7,5	108	16	1"
R5003.2000	S003-20	51,59	43,7	58,7	79	15,1	36,3	22	7,5	12	14	1.1/4"
R5003.2400	S003-24	61,09	50,8	69,9	94	17,9	41,1	25	7,5	135	16	1.1/2"
R5003.3200	S003-32	72,24	62,7	77,8	102	21,4	48,2	26	9	135	16	2"
R5003.4000	S003-40	84,94	74,9	88,9	114	25,4	54,1	38	9	135	19	2.1/2"
R5003.4800	S003-48	102,4	90,9	106,4	135	31	65,3	41	9	17	22	3"

AUTRES DIMENSIONS CONSULTER NOTRE SITE INTERNET / OTHER DIMENSIONS CONSULT OUR WEBSITE

DEMI-BRIDE SAE 6000  
CUT SPLIT FLANGES - 6000 PSI

**R5006**



Code	Type	Dimensions										
		A	B	C	D	E	F	G	I	L	H	TAILLE
R5006.0800	S006-08	32,54	24,6	40,5	56	9,1	23,6	22	7,2	88	16	1/2"
R5006.1200	S006-12	42,06	32,5	50,8	71	11,9	30	28	8,3	11	19	3/4"
R5006.1600	S006-16	48,41	38,9	57,2	81	13,9	34,8	33	9	13	24	1"
R5006.2000	S006-20	54,76	44,5	66,7	95	15,9	38,6	38	9,8	15	27	1.1/4"
R5006.2400	S006-24	64,29	51,6	79,4	113	18,3	47,5	43	12,1	17	30	1.1/2"
R5006.3200	S006-32	80,16	67,6	96,8	133	22,2	56,9	52	12,1	21	37	2"

AUTRES DIMENSIONS CONSULTER NOTRE SITE INTERNET / OTHER DIMENSIONS CONSULT OUR WEBSITE

MATERIEL : ACIER (SUR DEMANDE : ACIER INOX AISI 316) - MATERIAL : STEEL (ON REQUEST : STAINLESS STEEL AISI 316)